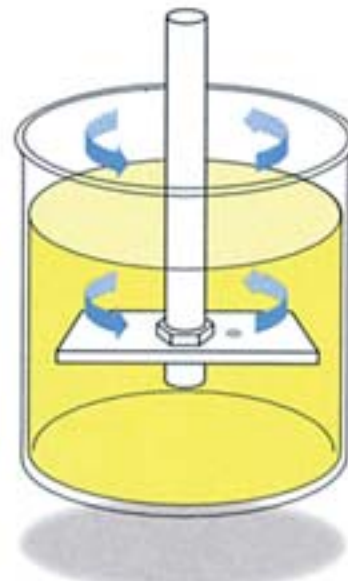


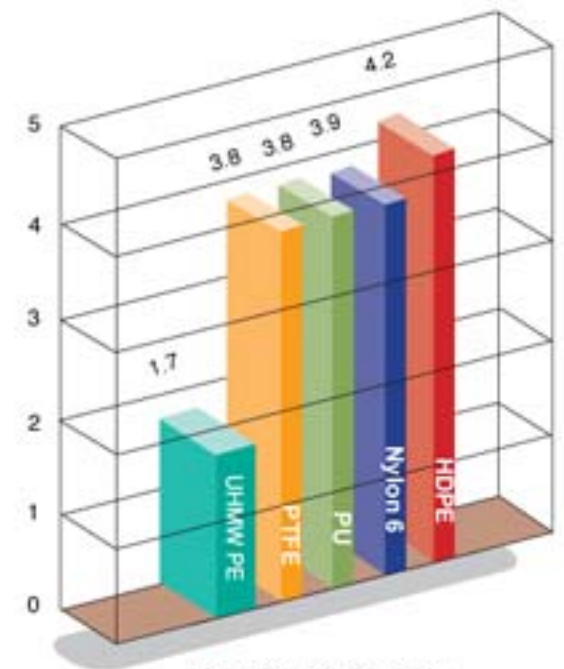
### Moisture Absorption

• % of absorption - UHMW-PE = 0



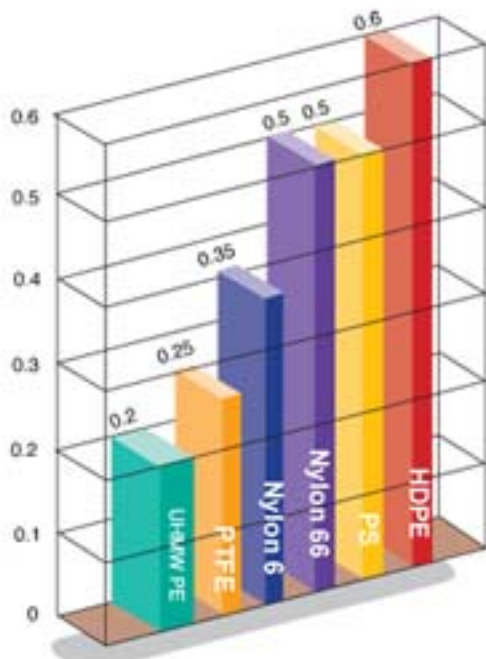
### Aluminum oxide slurry abrasion test

• A 2.7" (68mm) x 1" (25mm) x 0.25" (6.3mm) plaque  
 • 1750 rpm for 2 hours  
 • Controlled temperature of 23°C



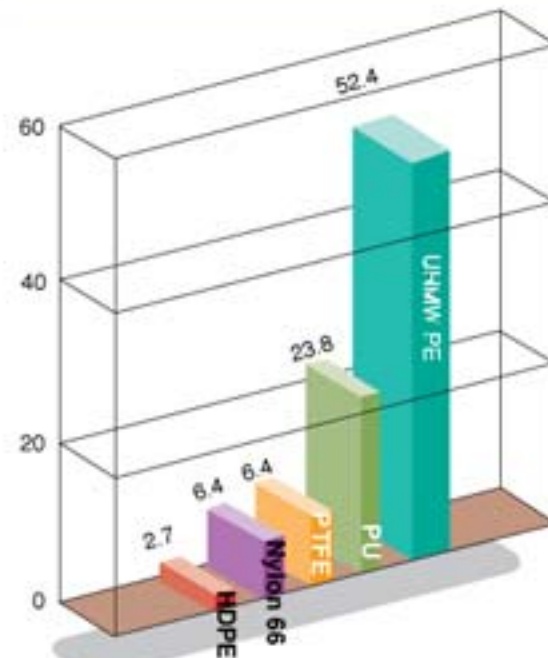
### Abrasion resistance

• Aluminum oxide slurry test



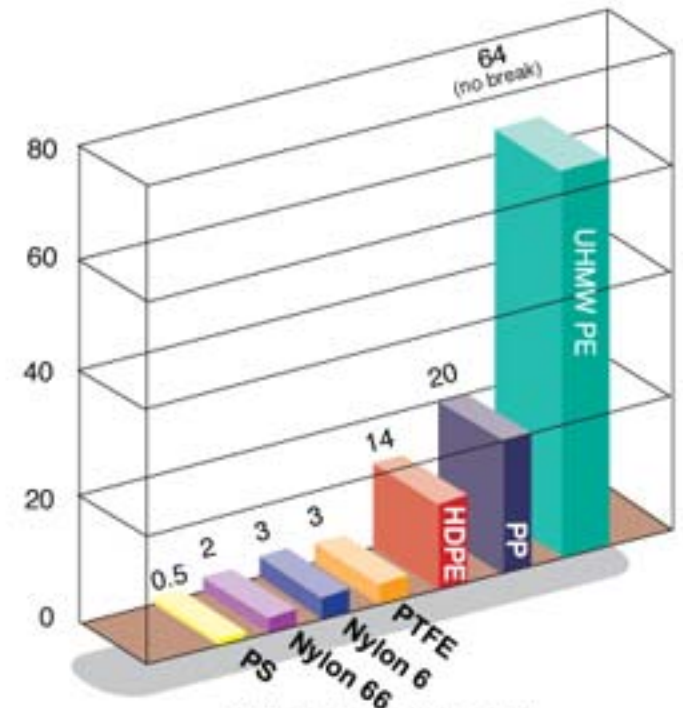
### Static coefficient of friction

• Against polished steel  
 • Test method: ASTM 1894-95  
 • Measured at 23°C



### Double Notched Izod impact\*

• Test method: ASTM D4020-95  
 • Measured at 23°C



### Notched Izod impact\*

• Test method: ASTM D256-93A  
 • Measured at 23°C